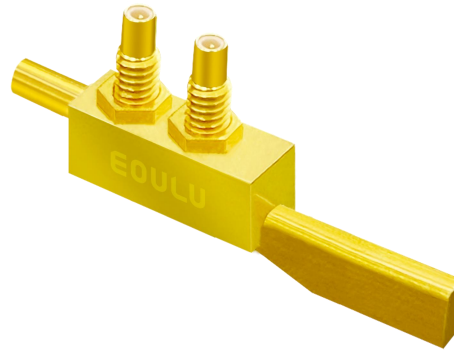


Eoulu Sky Series - DC Probes

B-101 Ceramic Blade DC Probe Holder

Novel Features

- Fitted with standard ceramic blade probe
- Probe tip material: Tungsten, Paliney-7
- Wide operating temperature $-60^{\circ}\text{C} \sim 300^{\circ}\text{C}$
- Kelvin test, fully guarded measurements to fA and fF levels



B-101 Probe Holder



B-101 Replaceable Probe Tip

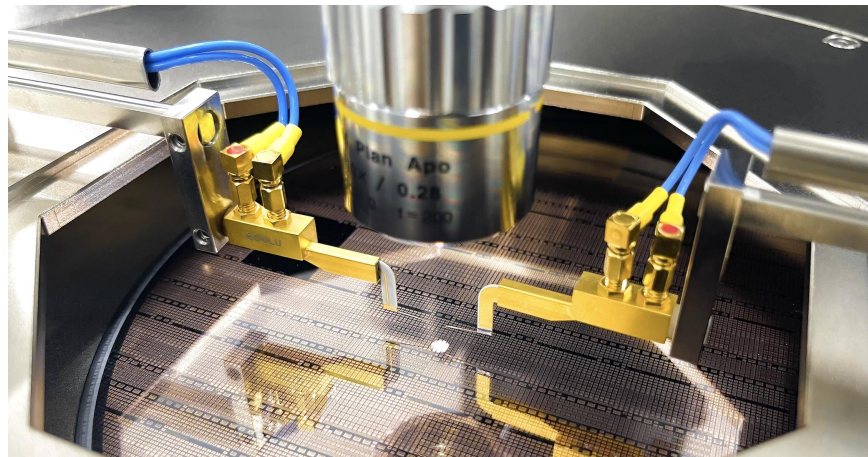
B-101 Electrical Specifications

1	Characteristic Impedance	50 Ω
2	Frequency Range	DC ~ 100 MHz
3	Maximum DC Current	1 A *
4	Maximum DC Voltage	500 V
5	Diameter of Needle	250 μm
6	Connector	SSMC

* DC current

B-101 Replaceable Probe Tips

Part Number	Description
D-001	REPLACEMENT PROBE TIP, 10 μm DIAMETER, P7, FOR B-101, BOX OF TEN
D-002	REPLACEMENT PROBE TIP, 19 μm DIAMETER, P7, FOR B-101, BOX OF TEN
D-021	REPLACEMENT PROBE TIP, 10 μm DIAMETER, TUNGSTEN, FOR B-101, BOX OF TEN
D-022	REPLACEMENT PROBE TIP, 19 μm DIAMETER, TUNGSTEN, FOR B-101, BOX OF TEN



Product parameters are subject to change without prior notice. All product images are subject to the actual products, and Suzhou Eoulu System Integration Co., Ltd. reserves the interpretation right for the content.

Web: www.eoulu.com

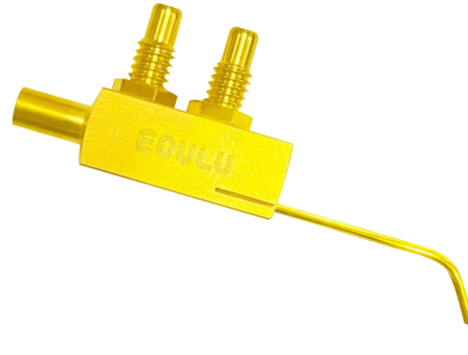
Email: info@eoulu.com

Tel: 4008808776

B-102 Kelvin DC Probe Holder

Novel Features

- Kelvin probe, replaceable coax probe tips included
- Probe tip material: Tungsten
- Wide operating temperature $-60^{\circ}\text{C} \sim 150^{\circ}\text{C}$
- Kelvin probe, fully guarded measurements to fA and fF levels



B-102 Probe Holder



B-102 Replaceable Probe Tip

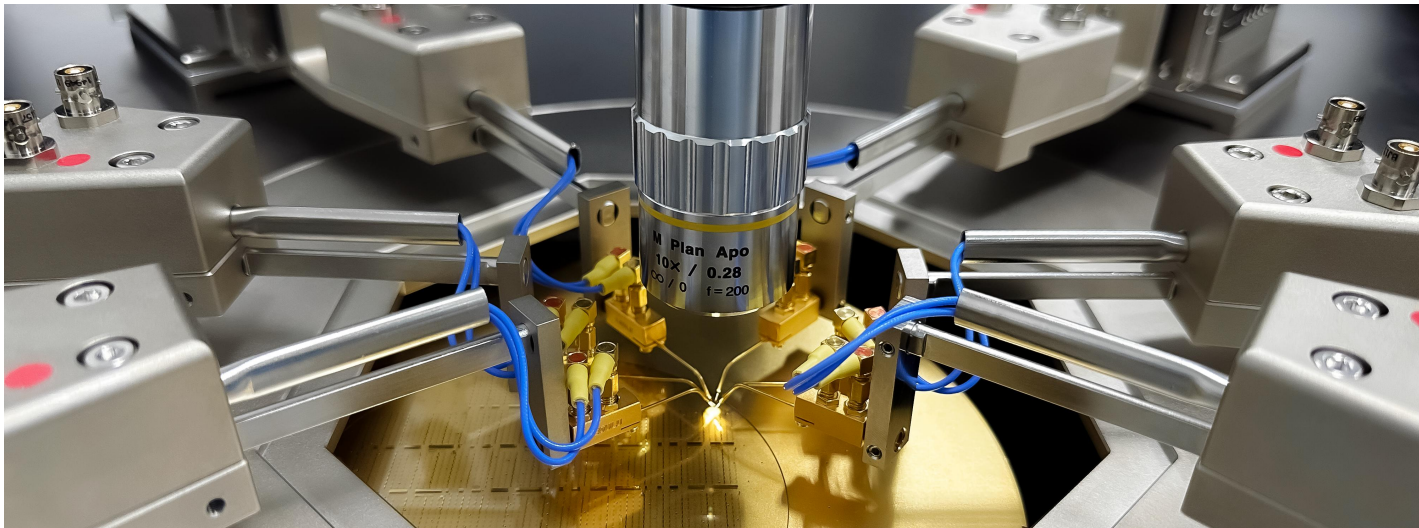
B-102 Electrical Specifications

1	Characteristic Impedance	50 Ω
2	Frequency Range	DC ~ 100 MHz
3	Maximum DC Current	1 A *
4	Maximum DC Voltage	500 V
5	Body Material	Gold plated
6	Connector	SSMC

* DC current

B-102 Replaceable Probe Tips

Part Number	Description
D-003	REPLACEMENT PROBE TIP, 10 μm DIAMETER, FOR B-102, BOX OF TEN



Product parameters are subject to change without prior notice. All product images are subject to the actual products, and Suzhou Eoulu System Integration Co., Ltd. reserves the interpretation right for the content.

Web: www.eoulu.com

Email: info@eoulu.com

Tel: 4008808776

D Series Probe Tips

Novel Features

- Probe tip material: Tungsten
- Durable and low cost
- Advanced technology, excellent consistency
- Maximum Temperature: 300°C
- Various sizes are available



Product parameters are subject to change without prior notice. All product images are subject to the actual products, and Suzhou Eoulu System Integration Co., Ltd. reserves the interpretation right for the content.

Web: www.eoulu.com

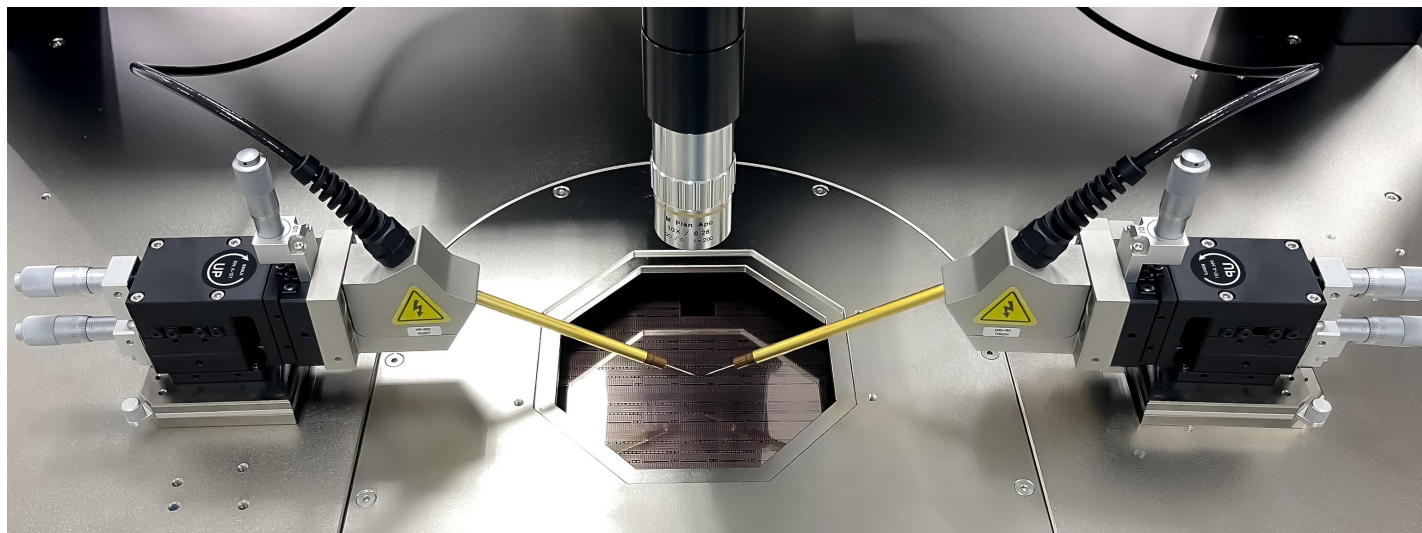
Email: info@eoulu.com

Tel: 4008808776

D Series Probe Tips Electrical Specifications

1	Characteristic Impedance	50 Ω
2	Maximum DC Current	1 A *
3	Maximum DC Voltage	> 500 V
4	Diameter of Needle	500 μm

* DC Current (Due to the different tip radius, the DC current is only applied to the tip whose radius is more than 10 μm)



Product parameters are subject to change without prior notice. All product images are subject to the actual products, and Suzhou Eoulu System Integration Co., Ltd. reserves the interpretation right for the content.

Part Number

Part Number	Description
D-06	PROBE TIP, TUNGSTEN, STRAIGHT, 0.6 μm , 1 SET OF 25
D-12	PROBE TIP, TUNGSTEN, STRAIGHT, 1.2 μm , 1 SET OF 25
D-24	PROBE TIP, TUNGSTEN, STRAIGHT, 2.4 μm , 1 SET OF 25
D-120	PROBE TIP, TUNGSTEN, STRAIGHT, 12 μm , 1 SET OF 25
D-250	PROBE TIP, TUNGSTEN, STRAIGHT, 25 μm , 1 SET OF 25
D-1200	PROBE TIP, TUNGSTEN, STRAIGHT, 120 μm , 1 SET OF 25
D-1500	PROBE TIP, TUNGSTEN, STRAIGHT, 150 μm , 1 SET OF 25
D-A06	PROBE TIP, TUNGSTEN, 45°, 0.6 μm , 1 SET OF 25
D-A12	PROBE TIP, TUNGSTEN, 45°, 1.2 μm , 1 SET OF 25
D-A24	PROBE TIP, TUNGSTEN, 45°, 2.4 μm , 1 SET OF 25
D-A120	PROBE TIP, TUNGSTEN, 45°, 12 μm , 1 SET OF 25
D-A250	PROBE TIP, TUNGSTEN, 45°, 25 μm , 1 SET OF 25

Product parameters are subject to change without prior notice. All product images are subject to the actual products, and Suzhou Eoulu System Integration Co., Ltd. reserves the interpretation right for the content.